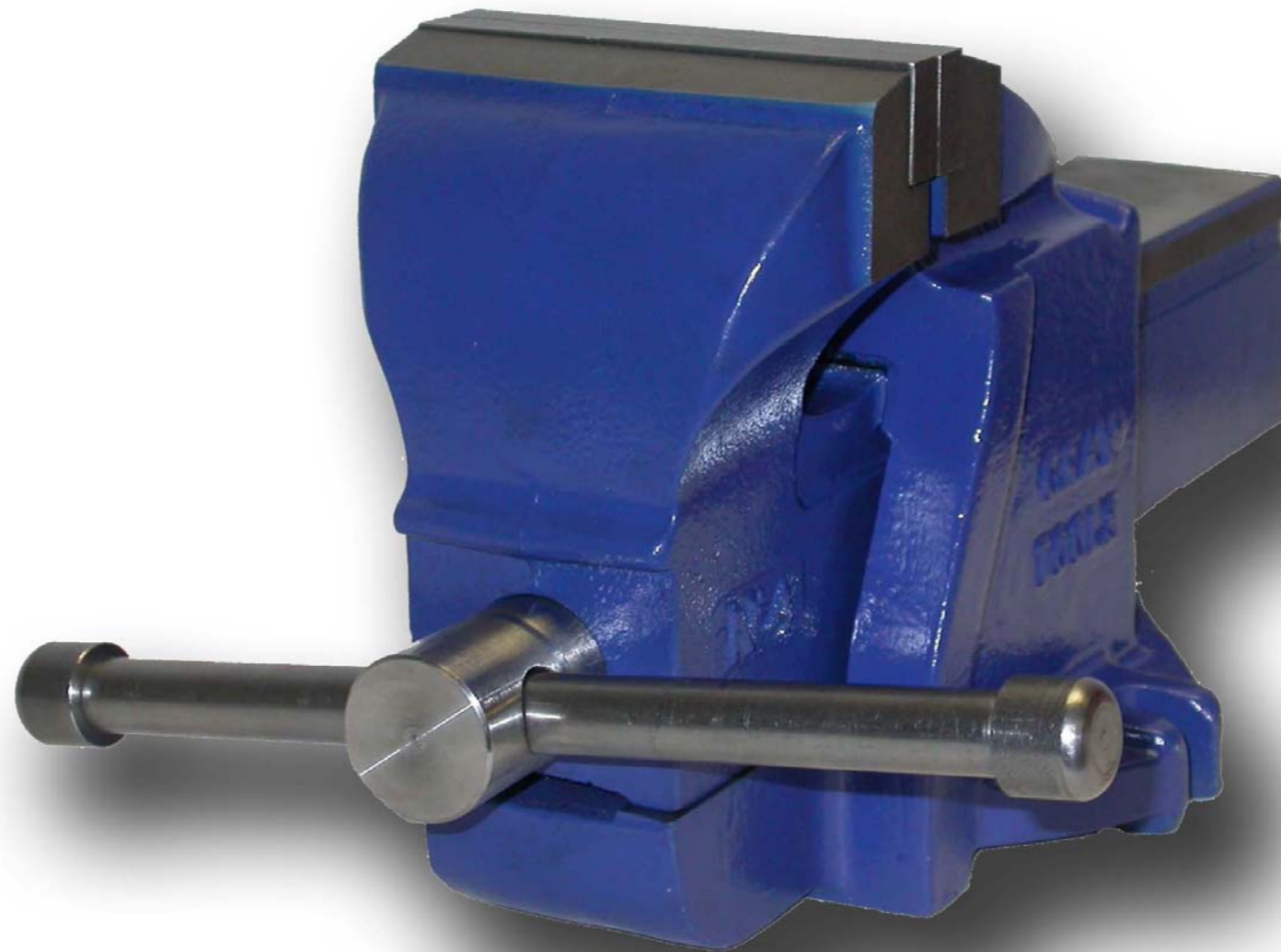


the world's finest  
**Industrial Hand Tools**  
on the market today

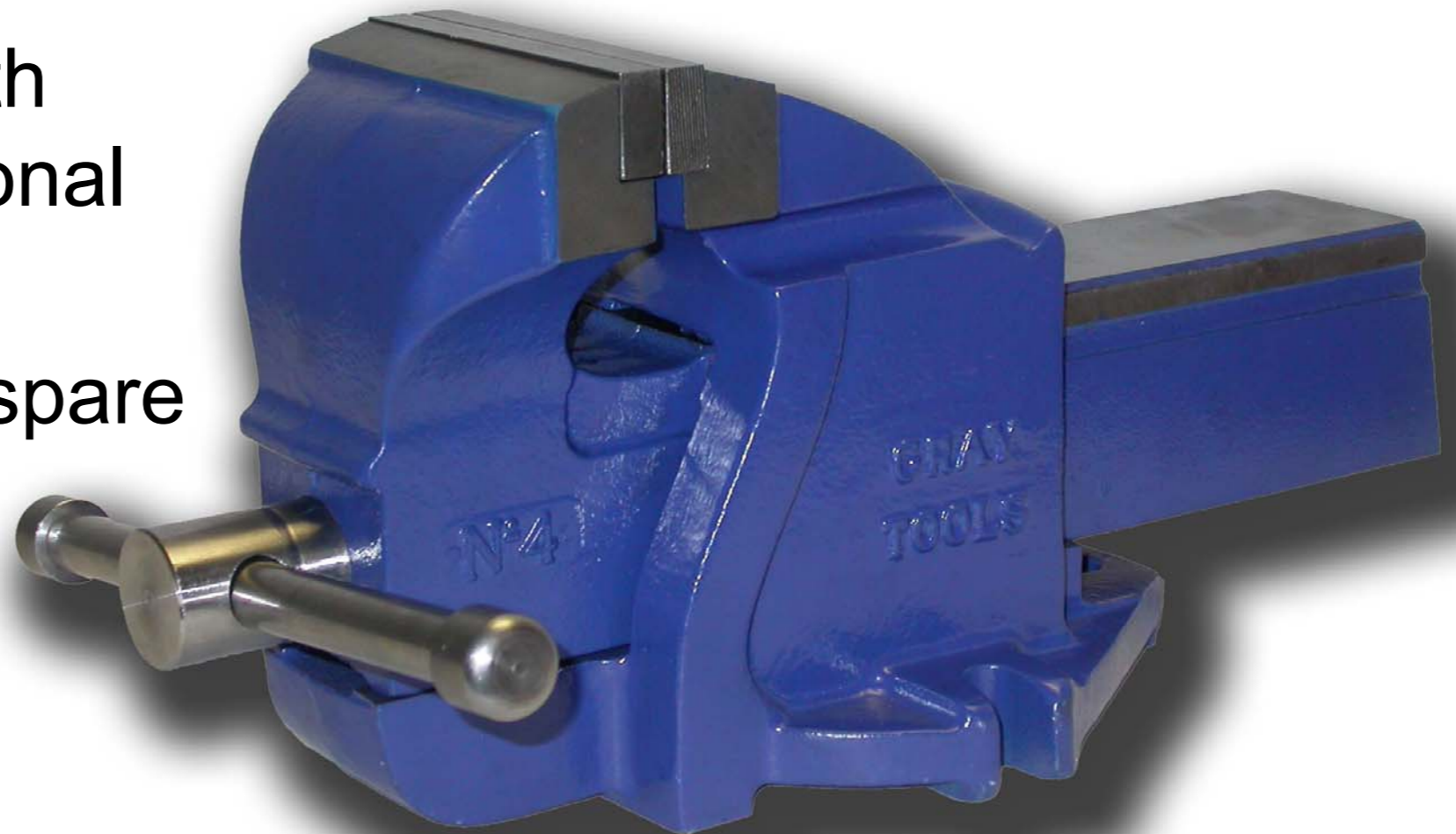
**GRAY TOOLS**

# New Mechanics' Vises



# Range Overview

- 5 Sizes in total
  - 4", 4½", 5", 6" & 8"
- Fixed base units with swivel base as optional accessory
- Complete range of spare parts available



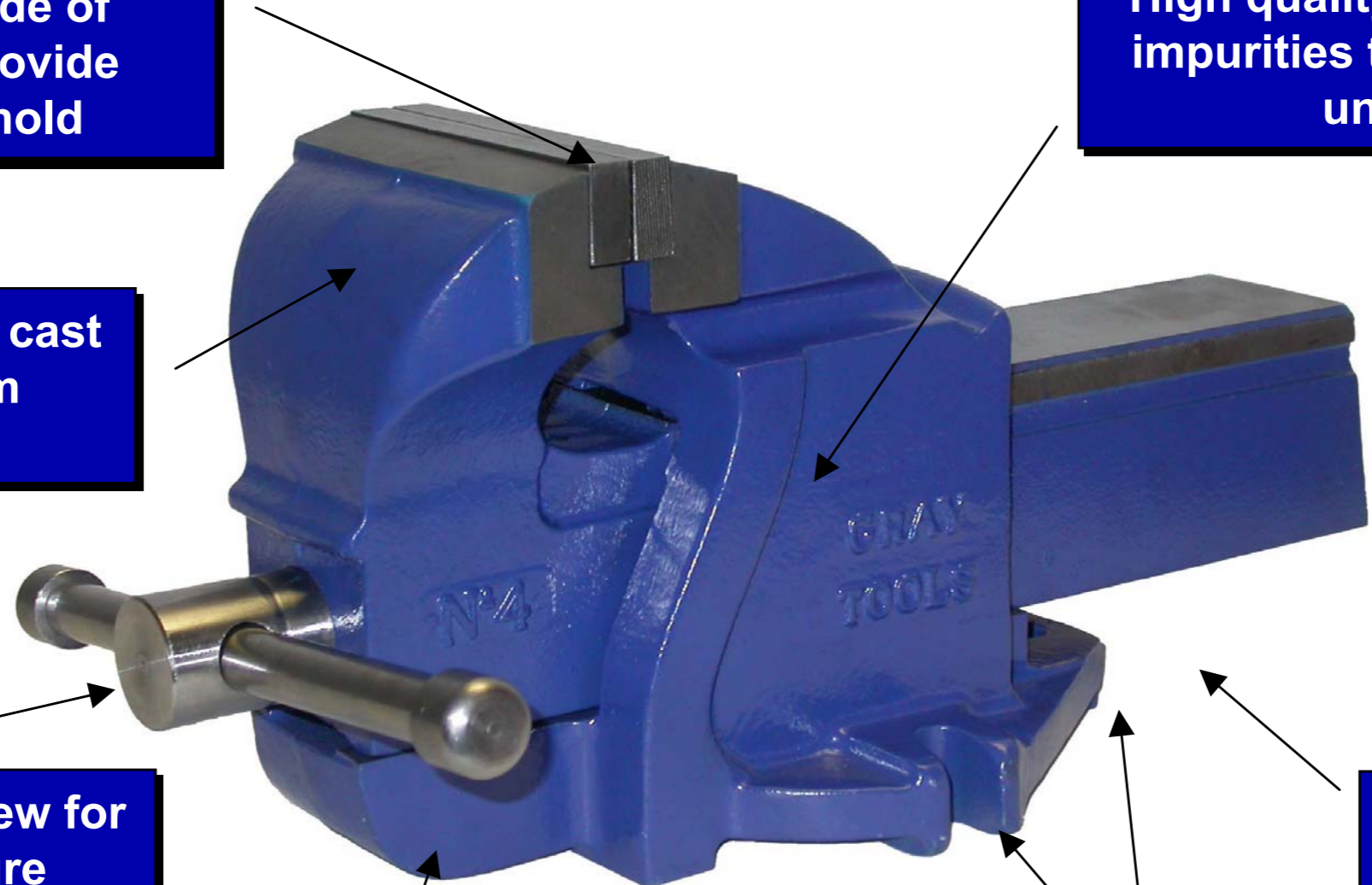
# Tool Overview

Heavy-duty replaceable serrated jaws made of hardened steel provide secure reliable hold

High quality castings free of impurities that cause failure under load

Solid 1 piece sliding cast unit for maximum durability

Optional 360° swivel base available



Precision nut & screw for powerful & secure clamping. Removable nuts allow for quick & easy handle replacement

Classic & robust design

Added support for heavy duty applications

Side and rear bolt holes for added user safety

# Product Specifications

	<b>Jaw Width</b>	<b>Jaw Opening</b>	<b>Jaw Depth</b>	<b>Net Weight (lbs)</b>
Number 3	4"	4.75"	2.75"	33
Number 4	4.5"	4.5"	3"	43
Number 5	5"	6.5"	3.25"	50
Number 6	6"	8"	3.56"	70
Number 8	8"	9"	4"	85

# Competitive Offerings

**A**



**B**



- Gray vises feature a cast vise body ideally suited to handle heavy loads **A** & **B**.
- No welded parts!

# Packaging

- Vises will be available in skid quantities and single quantities
- Skid quantities will vary depending on size and whether they are packaged in bulk (loose) or in boxes
- Bulk (loose) vises are available in skid quantities by vise size or mix & match
- Boxed (packaged) vises are available in skid quantities by vise size, mix & match or single quantities
- Only boxed vises are available in single quantities

# Promotion Support

**GRAY TOOLS**  
the tools of the trade®  
www.graytools.com

## TAKE HOLD ...

... with the brand new line of mechanic's vises from Gray Tools. Made of the highest quality to ensure solid reliable performance for life.



*Special Introductory Prices*

Gray Tools Part#	Jaw Width	Jaw Opening	Jaw Depth	Net Weight (lbs)	List Price	Introductory Price
VC36	4"	4 3/4"	2 3/4"	33	\$119.40	\$76.45
VC46	4 1/2"	5 1/2"	3"	40	\$142.40	\$94.45
VC56	5"	6 1/2"	3 1/4"	50	\$180.70	\$121.95
VC66	6"	8"	3 9/16"	70	\$246.00	\$163.45
VC86	8"	9"	4"	85	\$336.45	\$219.45

Available at:

Offer Expires September 30, 2004

**GRAY TOOLS**  
the tools of the trade®  
www.graytools.com

## Saisissez L'occasion...

... grâce à la nouvelle gamme d'étaux de mécanicien Gray Tools. Fabriqués selon des normes de la plus haute qualité pour un rendement fiable, à vie.



*Prix Spéciaux De Lancement*

N° de pièce Gray Tools	Largeur de la mâchoire	Profondeur de la mâchoire	Hauteur de la mâchoire	Poids net (kg)	Prix de liste	Prix de lancement
VC36	4"	4 3/4"	2 3/4"	33	\$119.40	\$76.45
VC46	4 1/2"	5 1/2"	3"	40	\$142.40	\$94.45
VC56	5"	6 1/2"	3 1/4"	50	\$180.70	\$121.95
VC66	6"	8"	3 9/16"	70	\$246.00	\$163.45
VC86	8"	9"	4"	85	\$336.45	\$219.45

En vente chez:

L'offre se termine le 30 septembre 2004

- 150 FREE full color flyers with every skid order
- Flyer has English text on one side & French on the other
- Flyers available at the time of the order. No waiting!